



CTSI

Innovating For A Safer, Smarter World

Portal > Knowledgebase > Wireless Communications > Cambium Networks > Discovering the PTP800 in Wireless Manager using SNMP V3

Discovering the PTP800 in Wireless Manager using SNMP V3

Support Team - 2016-12-16 - 0 Comments - in Cambium Networks

Configuration on the PTP800:

- > On the Radio go the SNMP configuration under Management >> SNMP.
- > Set the Minimum SNMP Privilege level to System Administrator or Security Administrator.

Enable the SNMP State.

- > SNMP Access Control can be configured so that Access to SNMP is controlled via IP address. Up to three IP addresses may be entered.

- > Set the SNMP Version to V3.

- > You can select the SNMP Security Mode to Web- Based or MIB Based.

MIB-based: SNMPv3 security parameters are managed via SNMP MIBs.

Web-based: SNMPv3 security parameters are not available over SNMP, but instead are configured using the SNMP Accounts page.

- > SNMP Engine ID Format is supported for MAC Address, IPV4 Address and Text String.

Specifies whether the Engine ID is generated from the MAC Address, IPv4 Address, Text String or IPv6 Address

- > SNMP port as 161

- > You can set the Sys Contact, Sys Name and Sys Location based on your requirement.

- > SNMP user policy configuration (for SNMPv3)

This option is displayed when "Web-based" Security mode is selected. These determine which authentication and privacy protocols are required for SNMP users with roles System Administrator and Read only.

Security Level: Defines the security level and associated protocols that are required to allow SNMP users to access the system.

No Auth No Priv: Users are not required to use authentication or privacy protocols.

Auth No Priv: Users are required to use only authentication protocols.

Auth Priv: Users are required to use both authentication and privacy

protocols.

Authentication Protocol: Supported for MD5 and SHA.

> SNMP user accounts configuration: This option will be displayed when the WEB-Based Security mode is selected. We can create the users and set the roles for it. This user and password to be used for the SNMP Discovery. (Eg: User Name : test, Password : 12345678)

> SNMP Trap Configuration : We can set the Traps for the parameters and the Trap servers where to send the SNMP messages.

Configuration on the Wireless Manager:

> Go to Tools >> Discovery Configurator >> Node Discovery. (You can also try with the Network Discovery, we are using Node discovery for now)

> Uncheck the option "Consider V1 & V2", Select the SNMP Version as V3.

> SNMP Agent Port set to 161.

> Set the User Name (test) as configured on the PTP800 "SNMP User Accounts Configuration".

> Click on "Properties" >> Select "AuthNoPriv" for Security Level >> Auth Protocol as "MD5" >> Auth Password as 12345678.

All the configuration on the Wireless Manager about the SNMP v3 should match as configured on the PTP800 SNMP.

Step 1: SNMP Configuration

Attributes	Value	Units
SNMP Minimum Privilege Level	<input checked="" type="radio"/> System Administrator <input type="radio"/> Security Officer	
SNMP State	<input type="radio"/> Disabled <input checked="" type="radio"/> Enabled	
SNMP Access Control	<input type="radio"/> Disabled <input checked="" type="radio"/> Enabled	
SNMP Version	<input type="radio"/> v1/v2 <input checked="" type="radio"/> v3	
SNMP Security Mode	<input type="radio"/> MIB-based <input checked="" type="radio"/> Web-based	
SNMP Engine ID Format	<input type="radio"/> MAC Address <input checked="" type="radio"/> IPv4 Address <input type="radio"/> Text String	
SNMP Port Number	161	

Next >>

Step 2: SNMP MIB-II System Objects

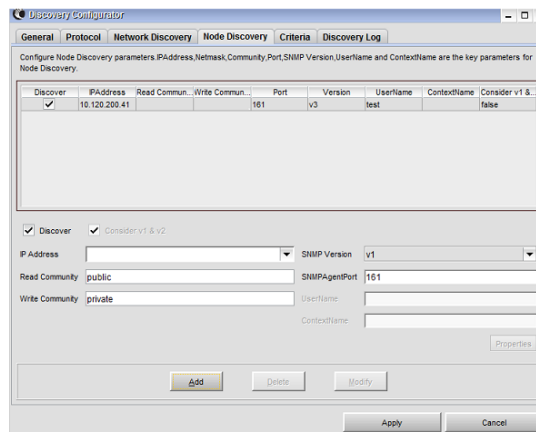
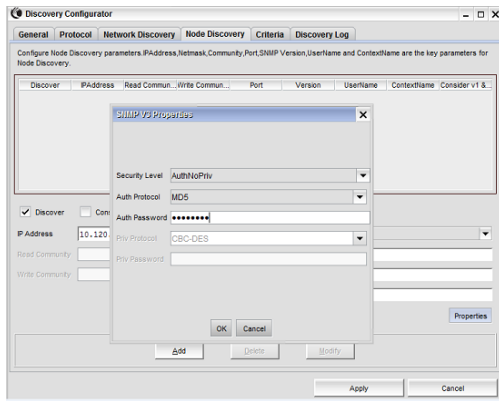
Attributes	Value	Units
Sys Contact		
Sys Name		
Sys Location		

<< Back Next >>

Step 3: SNMP User Policy Configuration

Attributes	Value	Units
System Admin Policy		
Security Level	<input checked="" type="radio"/> No Auth No Priv <input type="radio"/> Auth No Priv <input type="radio"/> Auth Priv	
Authentication Protocol	MD5	
Read Only Policy		
Security Level	<input type="radio"/> No Auth No Priv <input checked="" type="radio"/> Auth No Priv <input type="radio"/> Auth Priv	
Authentication Protocol	MD5	

<< Back Next >>



Step 4: SNMP User Accounts Configuration

User	Name	Role	Password Type	Password	Password Confirm
1	test	System Administrator	Authentication	*****	*****
2	readonly	Read Only	Authentication	*****	*****
3	readonly1	Disabled			
4	readonly2	Disabled			
5	readonly3	Disabled			
6	readonly4	Disabled			
7	readonly5	Disabled			
8	readonly6	Disabled			
9	readonly7	Disabled			
10	readonly8	Disabled			

◀ Back

Step 5: SNMP Trap Configuration

Attributes	Value	Units
SNMP Enabled Traps	<input checked="" type="checkbox"/> Cold Start	
	<input checked="" type="checkbox"/> Wireless Link Up Down	
	<input checked="" type="checkbox"/> Data Port Up Down	
	<input checked="" type="checkbox"/> Management Port Up Down	
	<input type="checkbox"/> Enabled Diagnostic Alarms	
Trap Receiver 1	SNMP Trap Receiver Enabled	Disabled <input checked="" type="radio"/> Enabled
	SNMP Trap Internet Address	10.120.200.208
	SNMP Trap Port Number	162
	SNMP Trap User Account	User 1: test
Trap Receiver 2	SNMP Trap Receiver Enabled	Disabled <input checked="" type="radio"/> Enabled

◀ Back

Next ▶▶

Tags

Cambium

Cambium Networks

PTP 820

PTP820

SNMP

Wireless Manager